

# Country Club

Scott Joplin  
arr. H. Brown

7

Measures 1-6 of the bass line. Measure 1 starts with a forte (*f*) dynamic. Measure 6 ends with a mezzo-forte (*mf*) dynamic. The notation includes a first ending bracket over measures 5 and 6.

7

Measures 7-12 of the bass line. Measure 7 starts with a sharp sign (#) on the first note. Measure 12 ends with a sharp sign (#) on the first note.

13

Measures 13-18 of the bass line. Measure 18 ends with a sharp sign (#) on the first note.

19

Measures 19-24 of the bass line. Measure 19 has a first ending bracket over measures 20 and 21. Measure 21 has a second ending bracket over measures 22 and 23. Measure 22 starts with a forte (*f*) dynamic.

25

Measures 25-31 of the bass line. Measure 25 starts with a mezzo-forte (*mf*) dynamic. Measure 26 has a first ending bracket over measures 27 and 28. Measure 28 starts with a forte (*f*) dynamic.

32

Measures 32-37 of the bass line. Measure 37 ends with a double bar line and repeat sign.

38

Measures 38-43 of the bass line. Measure 38 has a first ending bracket over measures 39 and 40. Measure 40 starts with a mezzo-forte (*mf*) dynamic.

44

Measures 44-49 of the bass line. Measure 49 ends with a sharp sign (#) on the first note.

50



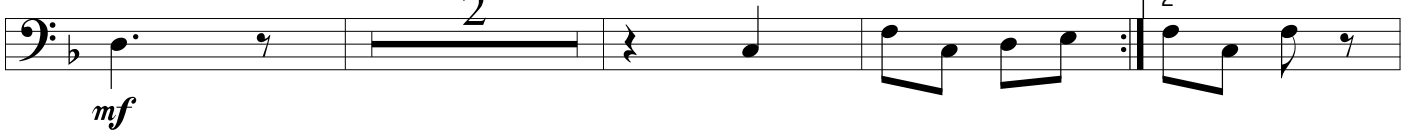
56



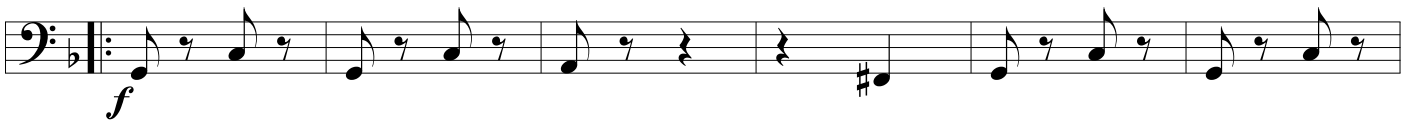
63



68



94



80



86

